

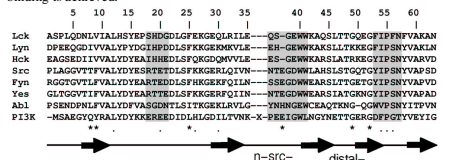
Comparison of SH3 domains by NMR and MD suggest different principles of increasing ligand affinity

Finn Bauer^{a,b}, Kristian Schweimer^b, Anke Eisenmann^b, Paul Röscher^b and Heinrich Sticht^a

^aInstitut für Biochemie, Abt. Bioinformatik, Emil-Fischer-Zentrum, Universität Erlangen-Nürnberg, 91054 Erlangen, Germany
^bLehrstuhl für Biopolymere, Universität Bayreuth, 95440 Bayreuth, Germany

Summary

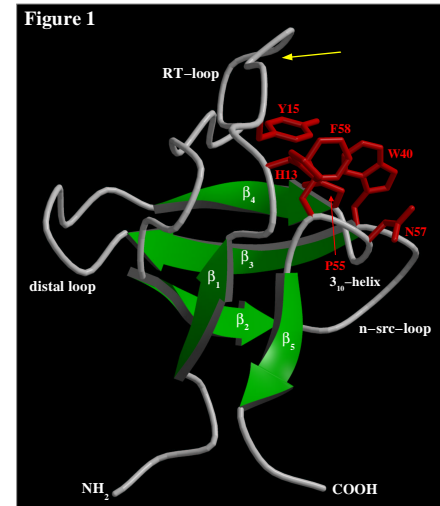
The src homology 3 (SH3) domains of the nonreceptor tyrosine kinases Lck and Lyn were chosen to investigate the role of particular residues in the binding interface to understand their role in ligand binding affinity and specificity. Both SH3 domains investigated bind with different affinities to a peptide of the herpesviral tyrosine kinase interacting protein (Tip). This peptide, containing the consensus sequence XPPLPXK, forms a left-handed type II polyproline (PPII) helix that lies along the binding site of the SH3 domain, with its prolines interacting with the aromatic residues on the hydrophobic face of the SH3 domain. The flexibility of the ligand binding site comprising the RT loop, the n-src loop and the 3₁₀ helix is thought to play a decisive role in determining the binding affinity. A prominent difference between LckSH3 and LynSH3 is P to G variation within the RT loop, which might play a role in the higher affinity of LynSH3. Nuclear magnetic resonance (NMR) ¹⁵N relaxation methods have been used to characterize the backbone dynamics of the SH3 domains and the results were compared with molecular dynamics (MD) simulations. Differences in the ¹H-¹⁵N nuclear Overhauser effects (hetNOE) and the longitudinal (R₁) and transverse (R₂) ¹⁵N backbone amide relaxation rates for individual amino acids correlate with the degree of atomic fluctuation extracted from the MD simulations. *In silico* mutagenesis studies suggested a P17G mutation of the RT loop of LckSH3 could increase loop flexibility and thus increase ligand affinity. The resulting LckSH3_P17G was characterized by NMR relaxation methods and fluorescence spectroscopy revealing a similar affinity as LynSH3. Differences in the overall dynamics of LckSH3 and LckSH3_P17G suggests different principles by which high affinity of ligand binding is achieved.



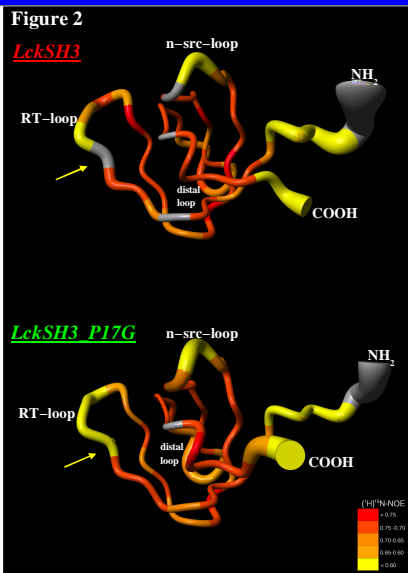
Sequence alignment of the SH3 domains from the tyrosine kinases Lck, Lyn, Src, Fyn, Yes and Abl and from phosphatidylinositol 3-kinase (PI3K). The numbering scheme of the Lck SH3 domain used in the present study is given at the top. Strictly conserved residues are denoted with an asterisk, and positions with conservative substitutions are denoted with a dot. Elements of secondary structure present in the structure of LckSH3 are given below the alignment. Gray boxes highlight those stretches of amino acids that are known to belong to the canonical binding site of SH3 domains including the RT loop, the n-src loop, and the 3₁₀ helix.

MD simulations

All molecular dynamics simulations were performed using the AMBER 6.0 simulation package and the Cornell et al. force field¹¹ with the TIP3P water model. For the wild-type LckSH3 six different starting structures, representing the six lowest energy structures of the NMR structure ensemble 1h92¹¹, were taken. P17G mutations of these structures were generated using SYBYL6.5 (Tripos Associates Inc., 1998). The molecules were solvated in ~60 x 60 x 60 Å waterbox and neutralized by adding counterions. After energy minimization using the SANDER module the temperature of the system was raised gradually from 100 to 300 K, and the system was equilibrated at 300 K for 22.5 ps. An additional 202.5 ps MD simulation was performed for data collection. 135 snapshots were saved for the subsequent analysis, corresponding to a 1.5 ps time step each of the simulation.

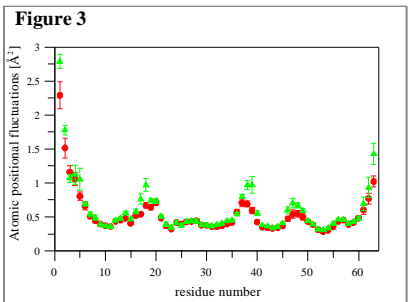


MOLSCRIPT drawing of the LckSH3 domain. The elements of regular secondary structure are emphasized as ribbon representation. The conserved residues that are known to be important for ligand binding are shown as red sticks. Position of residue 17 is marked by a yellow arrow.



MOLMOL representation of the Lck backbone fluctuations observed in the MD simulations. The radius of the tube is drawn proportional to the mean backbone fluctuation. In addition, residues are grouped and color-coded according to the ¹H-¹⁵N-NOE value as given in the legend. Position of residue 17 is marked by a yellow arrow.

The average (mass-weighted) residual backbone fluctuations are extracted from the trajectory-files using the PTRAJ program in AMBER 6.0. Figure 3 shows the mean values and standard errors of the backbone fluctuation for each residue. The proline to glycine exchange in position 17 increases the fluctuation of almost all amino acids of the RT loop involved in interaction with proline-rich ligands. Likewise, the fluctuation of the n-src loop and the distal loop increases significantly, whereas the elements of regular secondary structure remain unchanged generating a rigid core. The increase of fluctuation of all loops indicated global effects on the conformational stability of the whole domain.

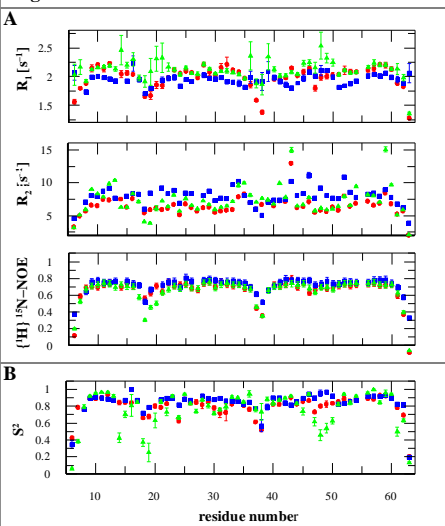


Representation of the atomic positional fluctuation of the backbone (CA, C, and N) during the MD simulation of 200 ps. wild-type LckSH3 (●), LckSH3_P17G mutant (▲)

NMR-experiments

To extract microscopic parameters of motion from the relaxation rates ¹⁵N-R₁, ¹⁵N-R₂, and ¹H-¹⁵N-NOE (Figure 4A) a Lipari-Szabo analysis was performed with the software package TENSOR2¹². The comparison of an isotropic diffusion model with a fully anisotropic diffusion model revealed very similar results. Thus the domains were approximated by an isotropic diffusion model and the small amount of anisotropy present in the experimental data is insignificant and can be ignored. For the final fitting, total correlation times (τ_c) of 5.25 ns, 4.62 ns and 5.01 ns for LynSH3, LckSH3 and the LckSH3_P17G, respectively, were used. The resulting order parameters S², which represent the local rigidity of the structure, are depicted in Figure 4B. S² is close to the maximum of 1.0 for the core residues of wild-type LckSH3 and LynSH3, whereas amino acids belonging to the RT loop, n-src loop and to a lesser extent to the distal loop exhibit reduced S² values. This finding is in good agreement with the ¹H-¹⁵N-NOE for the SH3 domains investigated. The residues of regular secondary structure show values near the maximum theoretical ¹H-¹⁵N-NOE of 0.834 (at 60 MHz ¹⁵N NMR frequency) qualitatively reflecting highly restricted internal motion, whereas values smaller than 0.65 (RT loop and n-src loop) are indicative of substantial internal motion on fast time scales (ps-ns).

Figure 4

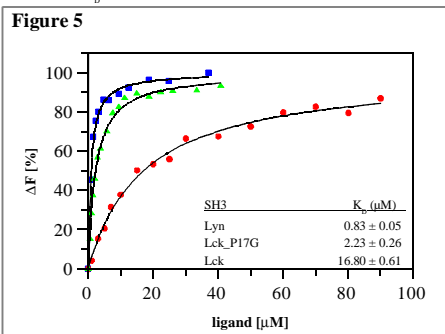


(A) ¹⁵N backbone amide relaxation parameters of LynSH3 (■), LckSH3 (●) and LckSH3_P17G (▲). From top to bottom: longitudinal relaxation rates (R₁), transverse relaxation rates (R₂), and ¹H-¹⁵N-NOE. (B) Order parameter (S²), representing the local rigidity of the structure, derived from an overall isotropic tumbling fit by TENSOR2¹².

Figure 2 shows the radius of the backbone proportional to the mean fluctuation observed in MD simulations, and the residues color-coded according to the values of the ¹H-¹⁵N-NOE. This representation reveals a high correlation between the motions observed in the molecular dynamics calculations and the experimental data. The S² profiles are similar for the wild-type LckSH3 and the mutant SH3 except for the loops. It is noteworthy that the S² values in the n-src loop are lowest in the wild-type, whereas the lowest S² values of the mutant are to be found in the RT loop and the distal loop. Thus the P17G mutant not only causes local effects in the RT loop, but reveals changes throughout the whole domain. This finding is supported by D₂O exchange experiments (data not shown) indicating a dramatic increase of flexibility on the ms to min. time scale for the proline to glycine mutant LckSH3.

Fluorescence spectroscopy

One of the major differences of the RT loop of LckSH3 and LynSH3 is position 17. Lyn, having a glycine at position 17 binds a 20mer peptide with a low K_D of 0.8 μM, whereas the K_D for the Lck-ligand interaction is 16.8 μM. Mutation of proline to glycine increases the affinity of Lck by nearly one order of magnitude (K_D 2.2 μM) (Figure 5).



Affinity measurements of a 20mer proline-rich peptide (Ac-ATLDPGMP TPPLPPRPANLG-Amid) for SH3 domains. Fluorescence titration of LckSH3 (●), LckSH3_P17G (▲), and LynSH3 (■).

Conclusion

Usually increased ligand affinity is achieved by additional van der Waals or electrostatic interactions. Lck_P17G reveals an alternative principle. Mutation of proline 17 of the RT loop to glycine increases the K_D of a 20mer peptide by nearly one order of magnitude. This is most likely achieved by increasing the population of "binding-competent" conformation by an increased conformational sampling.

References

- Cornell, W.D. et al. (1995), *J. Am. Chem. Soc.* **117**: 5179-97
- Dosset, P. et al. (2000), *J. Biomol. NMR* **16**(1):23-8
- Schweimer, K. et al. (2002), *Biochemistry* **41**(16):5120-30